

### Application

Model MBD-10 is a manual balancing damper designed to regulate the flow of air in a HVAC system. They are not intended to be used in applications as a positive shut off or for automatic control. The manual quadrant has an integral pointer for easy visual blade position indication.

### Ratings

#### Pressure

2 in. wg (0.5 kPa) - pressure differential

#### Velocity

Up to 2000 fpm (10.2 m/s)

#### Temperature

Up to 180°F (82°C)

### Construction

Construction	Standard
Frame Material	Galvanized steel
Frame Thickness	22 ga. (0.8mm)
Blade Material	Galvanized steel
Blade Thickness	20 ga. (1mm)
Axle Material	½ in. (13mm) Plated Steel
Operator	¾ in. (10mm) sq. locking manual quadrant
Operating Shaft	¾ in. (10mm) sq., 2½ in. (64mm) long extension

### Size Limitations

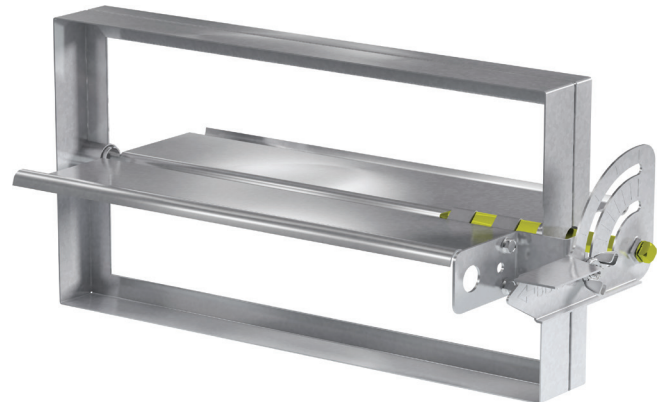
W X H	Minimum	Maximum*
Inches (mm)	6 x 4 (152 x 102)	36 x 12 (914 x 305)

### Document Links

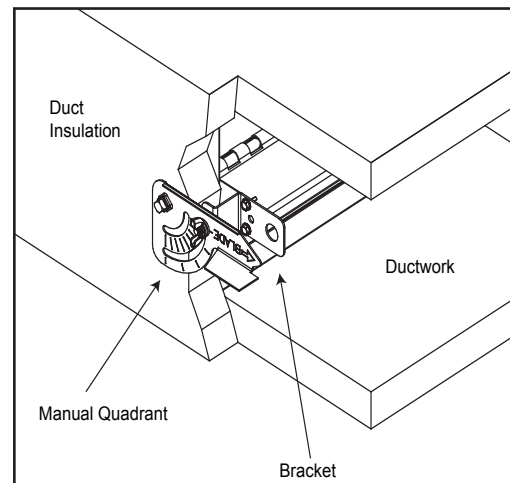
[Installation Instructions](#)

[Catalog](#)

[Damper Warranty](#)



\*W & H dimension furnished approximately ¼ in. (6mm) undersize.  
Manual quadrant is sent as a kit for field installation.



### Options and Accessories

- 1½ in. (38mm) standoff bracket
- 2 in. (51mm) standoff bracket

The standoff bracket with axle pin accommodates for the thickness of external duct insulation.